

2024

Innovation Awards



The recipients of the 2024 OHSU Innovation Awards exemplify what it means to be an innovator at OHSU. Through pioneering technologies and partnerships, these individuals and teams strive to translate new concepts into patient-centered solutions. This includes new cancer treatment strategies, anti-parasitic drug development and a wide-spanning collaboration with GE Healthcare.

We also celebrate OHSU members that achieved commercialization successes through patenting, licensing and new industry-sponsored research projects.

We hope that these stories inspire all OHSU members to see themselves as innovators and harness the resources offered by the OHSU Innovates network. By supporting intellectual property protection, collaboration agreements, providing startup guidance and entrepreneurial education, our ultimate goal is to empower all OHSU members to bring their ideas to life for societal impact.

Congratulations to all the awardees for their valuable contributions to the vibrant and growing OHSU innovation community.



Travis Cook, M.S., M.B.A., CLP

SENIOR DIRECTOR, TECHNOLOGY TRANSFER

Aditi Martin, Ph.D.

SENIOR DIRECTOR, COLLABORATIONS AND ENTREPRENEURSHIP

CREATORS OF LICENSED TECHNOLOGY

Connor Barth
Zachary Beattie
Luiz Bertassoni
Peter Campbell
Riccardo Carloni
Jessie May Cartier
Matthew Chang
Shawn Chavez
Yu-Jui (Roger) Chiu
Marissa Co
Lara Davis
Craig Dorrell
Brian Druker
Christopher Eide
Robert Eil
Lev Fedorov
Jack Ferracane
Mark Flory
Taisuke Furusho
Summer Gibbs
Markus Grompe
Nicholas Groves
Yukun Guo
Melanie Hakar
Jon Hennebold
Masahiro Horikawa
David Huang
Jennifer Jahncke
Yali Jia
Jeffrey Kaye
Dove Keith
Sancy Leachman
Jonathan Lee
Sanjay Malhotra
Andy Mendoza
Cristiane Miranda Franca
Antonio Montano
Terry Morgan
Hiroyuki Nakai
Brian O’Roak
Susan Ostmo
Justin Plaut
Srivathsan Ranganathan
Thomas Riley
Victoria Roberts
Rosalie Sears
Larry Sherman
Ov Slayden
Anthony Tahayeri
Dhanir Tailor
Eugene Tu
Jie Wang
Lei Wang
Richard Weleber
Kevin Wright

PRINCIPAL INVESTIGATORS OF NON-CLINICAL
INDUSTRY SPONSORED RESEARCH

John Brigande

Brian Druker

Andrew Emili

Jack Ferracane

Brian Frank

Summer Gibbs

Cary Harding

Hiroshi Ishikawa

Aaron Janowsky

Yali Jia

Kelley Jordan

Bory Kea

Sancy Leachman

Jen-Jane Liu

Jeffrey Marbach

Lisa Marriott

Xiaolin Nan

Leonardo Pereira

Juan Piantino

Phil Raess

Rosalie Sears

Joseph Shatzel

Lawrence Sherman

Show-Ling Shyng

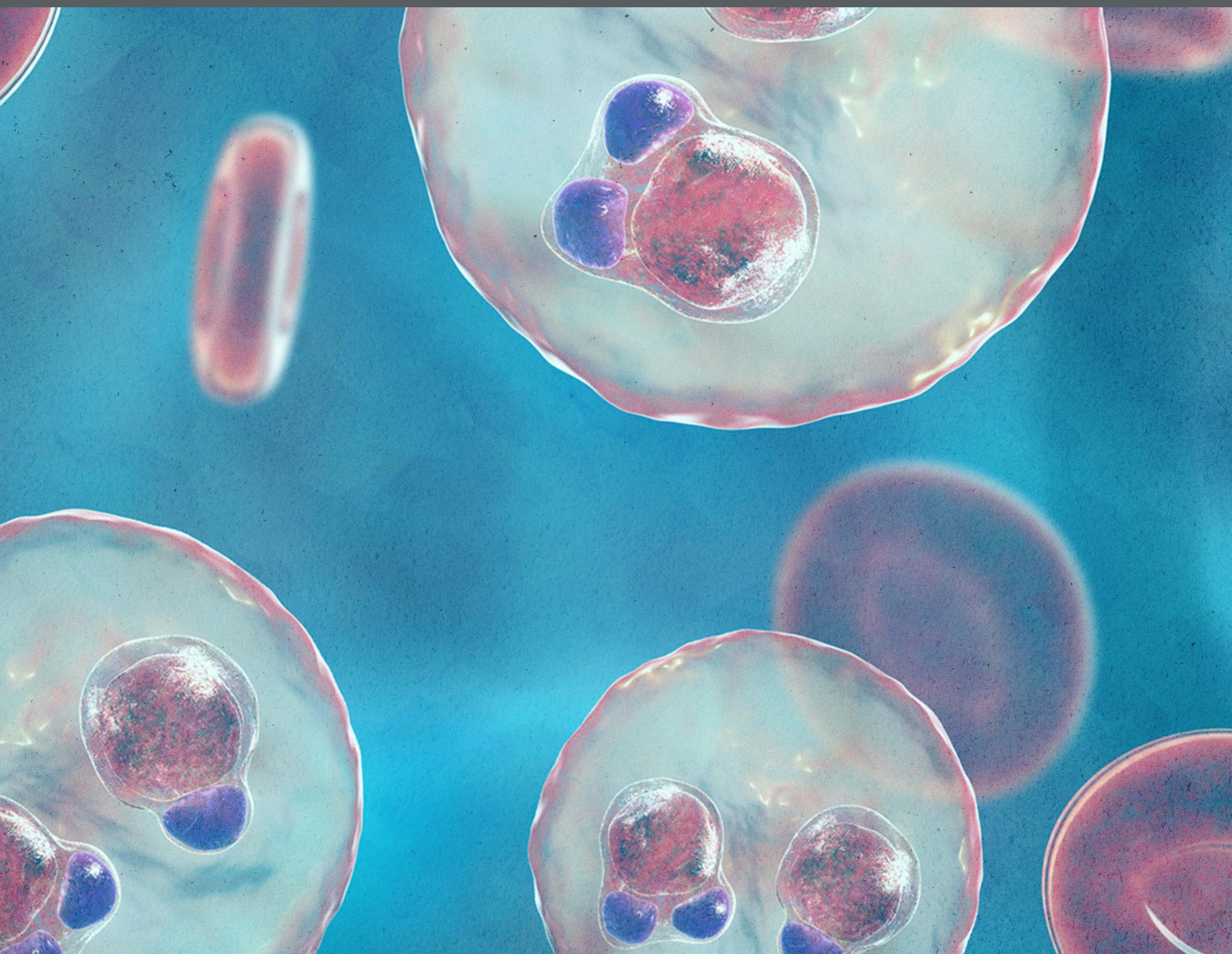
Daniel Streblow

Elie Traer

Brandon Wilder

David Wilson

Wassana Yantasee



INVENTORS OF ISSUED U.S. PATENTS

Avathamsa Athirasala

Eric Baker

Tom Barbara

Luiz Bertassoni

Patrizia Caposio

Jack Ferracane

Klaus Frueh

Jeffrey Gold

Yukun Guo

Matthew Hansen

Scott Hansen

Alec Hirsch

Wei Huang

Yali Jia

Ellen Langer

Xin Li

Nuria Marti-Gutierrez

Shannon McWeeney

Shoukhrat Mitalipov

Vishnu Mohan

Brendan Moloney

Hiroyuki Nakai

Edward Neuwelt

Carmem Pfeifer

Louis Picker

Jeffrey Pollock

Bill Rooney

Thomas Scanlan

Rosalie Sears

David Sheridan

Jessica Smith

Charles Springer

Daniel Streblow

Anthony Tahayeri

Jeffrey Tyner

Jeffrey Wu

Hua Xie

Wassana Yantasee

NEW COMPANIES BASED ON OHSU TECHNOLOGY

RegendoDent, Inc.

Siloam Vision, Inc.

Unfold Therapeutics, Inc.

Discovery Biotech, Inc.

EARLY CAREER INNOVATOR



Alex Bartlett, Ph.D.

POSTDOCTORAL RESEARCH FELLOW

DEPARTMENT OF SURGERY; DEPARTMENT OF CELL,
DEVELOPMENTAL AND CANCER BIOLOGY

The Early Career Innovator Award is presented to an OHSU early-career member, such as a student, postdoctoral fellow, or medical resident, who possesses a passion for innovation and for developing technologies to solve real-world problems. They work closely with the innovation ecosystems within and outside of OHSU to prepare their innovations for commercial success.

Alex Bartlett is a postdoctoral fellow working to develop new cancer therapies in the laboratory of Robert Eil, M.D. The innovative technology Bartlett helped develop could allow for a more targeted approach to cancer immunotherapies, which program the body's own immune cells to target and kill cancer cells.

Bartlett's commitment to advancing this promising therapy is evident in her active involvement with the OHSU Innovates network. Bartlett has worked to protect the intellectual property with Technology Transfer and secure funding for technology development through the OCTRI Biomedical Innovation Program. She has also engaged with the OHSU new ventures support, including the Entrepreneur-in-Residence program, and recently co-founded a new startup company, VertaBio.

CAREER INNOVATION EXCELLENCE



Michael Riscoe, Ph.D.

PROFESSOR OF MOLECULAR MICROBIOLOGY AND
IMMUNOLOGY, SCHOOL OF MEDICINE

RESEARCH CAREER SCIENTIST, PORTLAND VA MEDICAL CENTER

The Career Innovation Excellence Award is presented to an OHSU member who, over the course of their career, has shown themselves to be an accomplished inventor and entrepreneur. They have demonstrated a true passion for innovation, been successful in engaging and cultivating partnerships with industry, and worked tirelessly to translate their discoveries into solutions for real-world problems and the benefit of society.

Mike Riscoe has dedicated his career to exploring innovative solutions for infectious diseases, particularly focusing on combating malaria, a tropical disease that claims roughly half a million lives annually worldwide. Throughout his tenure at OHSU, Riscoe has been a highly productive innovator, contributing to more than 35 invention disclosures and more than 70 patent applications. Many of these patents have since been licensed to industry partners for further drug development and validation.

What truly sets Riscoe apart is his collaborative spirit and the variety of successful partnerships he has formed during his career. He has had numerous academic collaborations, including one with Harvard University researchers for the development of mosquito nets coated with an antimalarial compound developed in the Riscoe lab. Riscoe also maintains productive collaborations with pharmaceutical companies to develop new drugs for the treatment and prevention of malaria. In addition, Riscoe has fostered an entrepreneurial environment in his laboratory, where numerous lab members play pivotal roles in industry collaborations and submit their own invention disclosures.

NEW INNOVATOR OF THE YEAR



Robert Eil, M.D.

ASSISTANT PROFESSOR OF SURGERY, DIVISION OF SURGICAL ONCOLOGY, SCHOOL OF MEDICINE

ASSISTANT PROFESSOR OF CELL, DEVELOPMENTAL AND CANCER BIOLOGY, SCHOOL OF MEDICINE

The New Innovator of the Year Award is presented to an OHSU member who has recently disclosed their first technology to OHSU. They demonstrate a true passion for advancing technology development and collaborating with various innovator ecosystems within and outside of OHSU. They demonstrate an eagerness to see their discoveries translate into tangible solutions for societal benefit.

Robert Eil is working to improve the safety of a highly effective therapy for blood cancers to extend it to other types of cancer. Chimeric antigen receptor engineered T-cells, or CAR T-cells, use the body's own immune cells to target and kill cancer cells. CAR T-cell therapies also have off-target effects, however, and have been thought to be too toxic to be used more broadly for other types of cancer.

Eil is working on a new approach that would allow CAR T-cell therapies to directly target the affected organ, thereby potentially improving the safety and applicability of this approach. The technology has enormous potential to improve cancer outcomes by making this effective therapy applicable to more patients. Eil's commitment to the project and his collaborative work with multiple OHSU Innovates teams have driven substantial progress in recent years, culminating in the development of a new OHSU startup VertaBio.

PARTNERSHIP EXCELLENCE AWARD



Joaquin E. Cigarroa, M.D., FACC, MSCAI

DIRECTOR, KNIGHT CARDIOVASCULAR INSTITUTE, SCHOOL OF MEDICINE; DIVISION HEAD, CARDIOVASCULAR MEDICINE; MELVIN JUDKINS ENDOWED PROFESSOR OF CARDIOLOGY; PROFESSOR OF MEDICINE, DIVISION OF CARDIOVASCULAR MEDICINE, SCHOOL OF MEDICINE

Matthias Merkel, M.D., Ph.D

SENIOR ASSOCIATE CHIEF MEDICAL OFFICER, CAPACITY MANAGEMENT AND INPATIENT FLOW, OHSU HEALTH; PROFESSOR, DEPARTMENT OF ANESTHESIOLOGY AND PERIOPERATIVE MEDICINE

Joe Ness, M.H.A., RPh

SENIOR VICE PRESIDENT AND CHIEF OPERATING OFFICER, OHSU HEALTHCARE

The Partnership Excellence Award is presented to an OHSU employee, or team of employees, who demonstrates an entrepreneurial spirit and works closely with the OHSU Innovates commercialization network to foster and encourage collaborations. They demonstrate a successful track-record of establishing and developing new partnerships to advance innovative research.

OHSU and GE HealthCare have developed a long-standing and productive collaboration spanning multiple areas to develop and implement new healthcare solutions. Joe Ness and Matthias Merkel are drivers of projects in this collaboration, including being instrumental in helping GE HealthCare rapidly implement real-time capacity tracking capability across Oregon through OHSU Mission Control. This tool provided critical occupancy information that enabled both large health systems and smaller rural hospitals across the state to maximize resources during the early days of the

COVID pandemic. It has now transformed into the Oregon Capacity System operated by Apprise Health Insights in partnership with GE HealthCare and continues to serve as a critical capacity tool across the state.

The GE HealthCare collaboration also includes significant cardiovascular projects including cardiovascular imaging, interventional cardiology, and electrophysiology. These efforts, led by Joaquin Cigarroa, are focused on improving myocardial imaging, developing new approaches in structural cardiology, and using informatics and artificial intelligence in the treatment of arrhythmias. The collaboration is also developing novel concepts to improve how innovative cardiac procedures are taught and performed.

NEW INDUCTEES IN THE OHSU CHAPTER OF THE NATIONAL ACADEMY OF INVENTORS

Brian Druker

Jack Ferracane

Jane Kelly

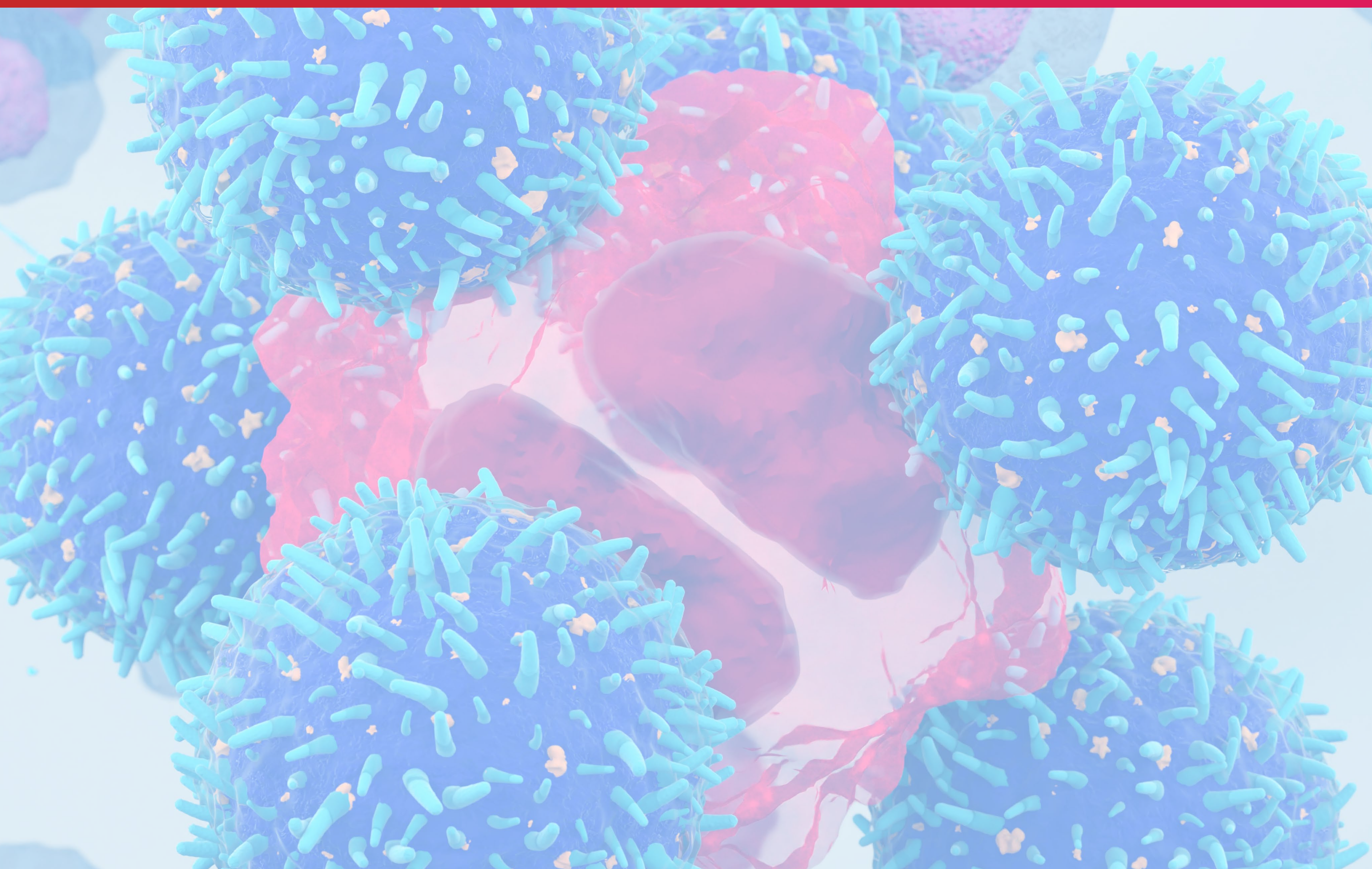
Xin Li

Sharon Mccoy

Aaron Nilsen

Bill Rooney

Wassana Yantasee



THANK YOU TO OUR SPONSORS

PLATINUM



SILVER



BRONZE

The logo for Klarquist, featuring the word "Klarquist" in a white serif font centered within a solid black rectangular background.

Klarquist

OHSU Innovates
3181 S.W. Sam Jackson Park Road
Portland, OR 97239
www.ohsu.edu/innovates

