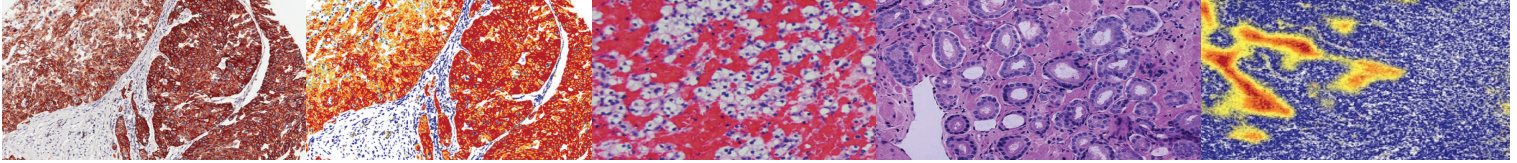


# OHSU Research Cores and Shared Resources

## Histopathology

OHSU's cores are your campus technology partners dedicated to the success of your project. For optimal results, take advantage of the state-of-the-art scientific resources within the OHSU community.

[www.ohsu.edu/cores](http://www.ohsu.edu/cores)



**HSR provides an array of pathology related services in support of basic, translational and clinical research at OHSU**

**Director**  
George Thomas, M.D.

**Staff**  
Kate Rice  
Chad Judy  
Alyssa Valles  
Joscelyn Zarceno

**Location**  
2730 S. Moody Ave  
Portland, OR 97201



**Email**  
[hsr@ohsu.edu](mailto:hsr@ohsu.edu)

**Phone**  
503.494.9631

**Web**  
[www.ohsu.edu/hsr](http://www.ohsu.edu/hsr)



### Mission

The Histopathology Shared Resource is a College of American Pathologists (CAP) and Clinical Laboratory Improvement Amendments (CLIA) accredited core facility that provides investigators with histology services critical for the progress of biomedical research. Additionally, we provide investigators with consultation and education in regard to the best use of histopathology services.

### Services

The HSR provides an array of pathology related services in support of basic, translational and clinical research at OHSU. Our services include:

### Histology

1. Tissue processing and embedding
2. Tissue sectioning
3. Cryostat sections (frozen tissues)
4. Sectioning for molecular studies
5. H&E staining
6. Special stains, e.g., Trichrome, Elastin, Iron, Reticulin, Geimsa, etc.

HSR staff can advise researchers on tissue preparation, preservation and handling to ensure the highest quality results. Our staff have extensive experience handling human and animal samples to ensure that tissues are properly embedded and precisely sectioned as requested.

### Immunohistochemistry (IHC)

1. Immunostaining of established antibodies
2. Optimization of new antibodies
3. Multiple Chromogens, e.g.:  
DAB, Fast Red, AP Blue, AP Green
4. Multiple Counterstains, e.g.:  
Hematoxylin, Methyl-Green
5. High-Throughput Automated IHC staining

### Consultative services

Advice on histology, biomarker studies, research protocols, safety issues and grants.

### More Information

For more information, please contact Histopathology Shared Resource at (503) 494-9631 or visit [www.ohsu.edu/hsr](http://www.ohsu.edu/hsr)